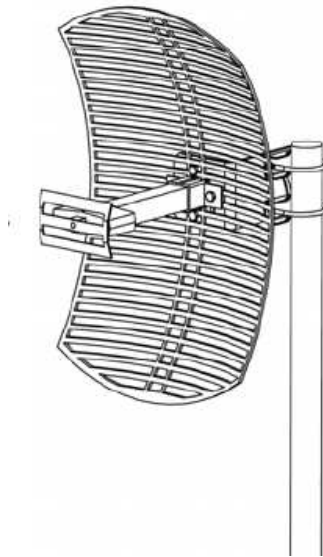


Installation Instructions for RFWATxxxGDNF – Grid Antenna

Completed Assembly

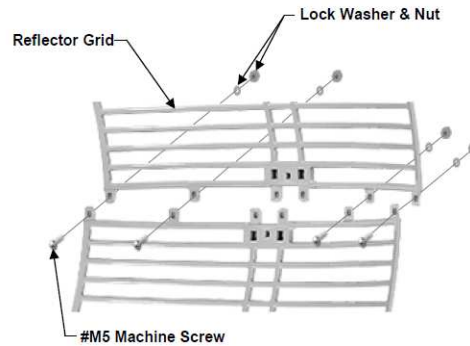


Antenna Components Included:

- (2) Antenna Grid Sections Halves
- (1) Antenna Feedhorn Assembly
- (1) Feed Reflector
- (1) Small Self-tapping screw
- (2) Mast Clamps
- (1) Aluminium L-Bracket
- (*) Machine screws w/ nuts, flat & lock washers

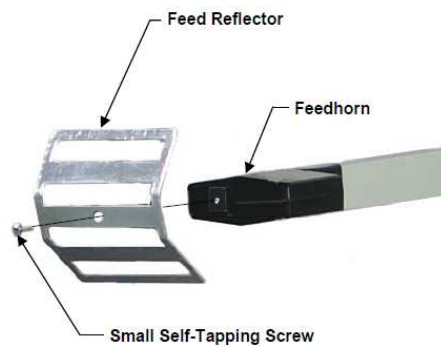
Antenna Assembly Instructions:

Assembly the halves of the Reflector Grid using machine screws with lock washers, flat washers and nuts as shown.



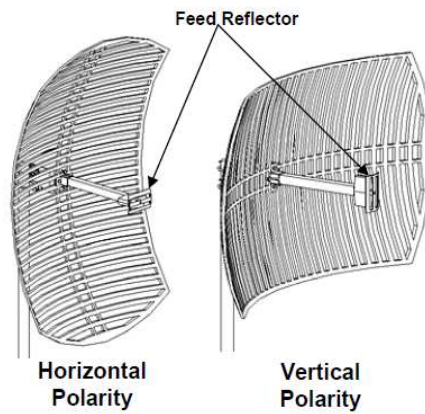
Feed Reflector Assembly

Install the feed reflector to the front of the feedhorn as shown below.



Orientation for Polarization

Determine the polarity that will be used for the antenna and orient the antenna either vertically or horizontally as shown below.



Important Note: Feed Reflector must be orientated to grid as shown for optimal antenna performance.

Mounting Bracket Installation

Install mast clamps on the U-Bolts as shown and faster the L-Bracking using lock washers and nuts.

