



PEAR™ M5277i

Outdoor/In-Building Directional Antenna

[MIMO 698-960 MHz and 1710-2700 MHz]

DESCRIPTION:

Directional wall mount MIMO antenna for outdoor and in-building applications such as DAS. The antenna is dual polarized supporting MIMO for 698-960 MHz and 1710-2700 MHz and contains integrated combiners.

Electrical Specifications

Frequency Band	698-960 MHz	1710-2700 MHz
Polarization	Vertical/Horizontal	Dual slant 45° (±45°)
Input Connector Type	2x N-Type (Female) with pigtail cable (12"/30cm length)	
Impedance	50 Ω	
VSWR	< 2.0:1	< 1.8:1
Isolation between ports (typ.)	< -25 dB	
Gain	5 dBi	8 dBi
PIM @ 2x 43 dBm	< -150 dBc	
Horizontal Beamwidth	~90°	~65°
Vertical Beamwidth	~110°	~65°
Input Power	50 W at ambient temperature of 122° F (50° C)	

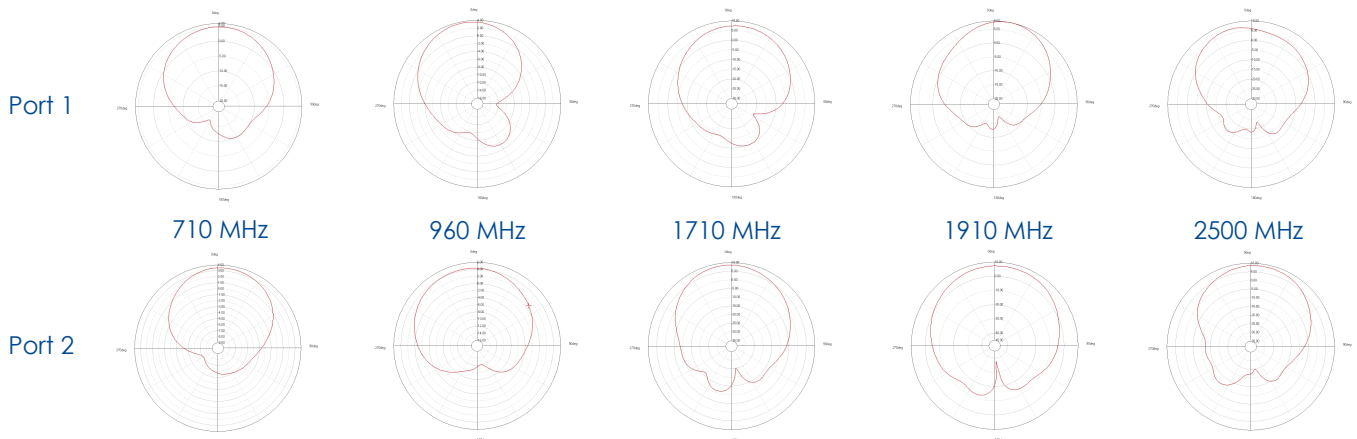
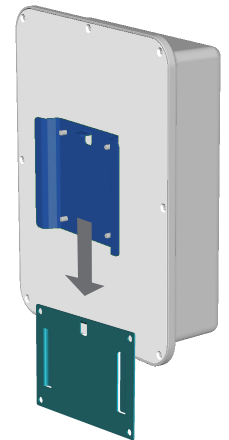
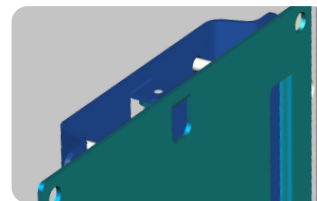
Mechanical Specifications

Operating Temperature	-67° to 158 °F (-55° to +70°C)
Environmental Conditions	Outdoor or Indoor
Antenna Weight	1.6 lbs (750g)
Radome Dimensions (H x W x D)	10.2" x 8.0" x 2.5" (259 x 203 x 65mm)
Flammability rating	UL 94-V0
Outdoor Ingress Protection	IP65
RoHS	Compliant
Radome Color	RAL 9010 (white)*

* Radome can be painted with recommended paint "Krylon Fusion for Plastic".

MOUNTING INFORMATION:

After affixing the mounting plate to the wall, then mount the Antenna onto the mounting plate by sliding it into the slots and securing it with the provided fasteners.





PEAR™ M5277

Outdoor/In-Building Directional Antenna

[MIMO 698-960 MHz and 1710-2700 MHz]

DESCRIPTION:

Directional wall mount MIMO antenna for outdoor and in-building applications such as DAS. The antenna is dual polarized supporting MIMO for 698-960 MHz and 1710-2700 MHz and contains integrated combiners.

Electrical Specifications

Frequency Band	698-960 MHz	1710-2700 MHz
Polarization	Vertical/Horizontal	Dual slant 45° (±45°)
Input Connector Type	2x N-Type (Female) with pigtail cable (12"/30cm length)	
Impedance	50 Ω	
VSWR	< 2.0:1	< 1.8:1
Isolation between ports (typ.)	< -25 dB	
Gain	5 dBi	8 dBi
Horizontal Beamwidth	~90°	~65°
Vertical Beamwidth	~110°	~65°
Input Power	50 W at ambient temperature of 122° F (50° C)	

Mechanical Specifications

Operating Temperature	-67° to 158 °F (-55° to +70°C)
Environmental Conditions	Outdoor or Indoor
Antenna Weight	1.6 lbs (750g)
Radome Dimensions (H x W x D)	10.2" x 8.0" x 2.5" (259 x 203 x 65mm)
Flammability rating	UL 94-V0
Outdoor Ingress Protection	IP65
RoHS	Compliant
Radome Color	RAL 9010 (white)*

* Radome can be painted with recommended paint "Krylon Fusion for Plastic".

MOUNTING INFORMATION:

After affixing the mounting plate to the wall, then mount the Antenna onto the mounting plate by sliding it into the slots and securing it with the provided fasteners.

