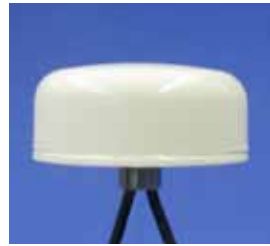


## Surface Mount MIMO Mobile WiMAX



3-cables

MIMO Low Profile Surface Mount Antennas



2-cables

- Multiple-Input-Multiple-Output antenna design
- Models with 2 or 3-cables: each with identical bandwidth coverage
- Passed Industry and Military shock and vibration standards
- Water ingress rating of IPx7

Many of the newest wireless networks, such as, WiMAX and WiFi are moving towards greater use of MIMO (Multiple-Input-Multiple-Output) systems and MIMO Antennas.

MIMO systems, also known as spatial multiplexing, transmit different data on different antenna elements. The net result is greater data throughput and improved bandwidth efficiency.

Mobile Mark's new MIMO Mobile Antenna provides two or three cable feeds, each with identical frequency coverage. Separate antenna elements are housed within a compact rugged radome.

Each element is fed by a different cable; each cable covers the entire bandwidth specified.

This Low Profile Surface Mount Antenna is housed in a rugged, UV Resistant, ASA radome that measures 1.5-inches (38mm) tall x 3.5-inches (89mm) in diameter. Standard configuration is Low Loss RF-195 cable with SMA plug.

The MIMO Mobile Antenna will stand up to harsh environments. It has a water ingress rating of IPX7 and has been tested to and passed Industry and Military shock and vibration standards: EN 61373, IEEE1478, and MIL-STD-810G.

### Antenna Model Configurator

SMD---- example - SMD-3500-3C3C3C

#### Combo Configuration

Code	Description
SMD-3500	Cable 1 =2.1-2.7 & 3.3-3.8 GHz Cable 2 =2.1-2.7 & 3.3-3.8 GHz Cable 3 =2.1-2.7 & 3.3-3.8 GHz

Cable #1	
Code	Description
3C	RF-195/SMA
3A	RF-195/TNC
3B	RF-195/MiniUHF
3J	RF-195/RevPol SMA
3K	RF-195/RevPol TNC

Cable #2	
Code	Description
3C	RF-195/SMA
3A	RF-195/TNC
3B	RF-195/MiniUHF
3J	RF-195/RevPol SMA
3K	RF-195/RevPol TNC

Cable #3	
Code	Description
3C	RF-195/SMA
3A	RF-195/TNC
3B	RF-195/MiniUHF
3J	RF-195/RevPol SMA
3K	RF-195/RevPol TNC
Blank	No 3rd Cable

**Note: For the 2 cable version, omit the last 2 digits. Example SMD-3500-3C3C**

### Specifications

<b>Frequency:</b>	2.1-2.7 & 3.3-3.8 GHz	<b>Weight:</b>	1.0 lbs (.45 kg)
<b>Gain:</b>	4 dBi (peak)	<b>Case Material:</b>	UV resistant ASA
<b>VSWR:</b>	2:1 max over range	<b>Color:</b>	White
<b>Isolation:</b>	>20 dB between elements	<b>Mounting:</b>	Thru-hole, 5/8" wide threaded stud
<b>Impedance:</b>	50 Ohms (nominal)	<b>Mounting Surface:</b>	Up to 1/4" (64 mm) thick metal
<b>Max power:</b>	20 watt	<b>Connectors:</b>	SMA Plug (Male) Standard
<b>Polarization:</b>	Vertical	<b>Operating Temp:</b>	-40 to +85° C
<b>Power:</b>	20 Watts max	<b>Water Ingress:</b>	IPx7 (when properly mounted)
<b>Cables:</b>	RF-195, 15 ft (457 cm)	<b>Shock and Vibration:</b>	EN 61373, IEEE-1478, MIL-810G TIA-329.2-C
<b>Case:</b>	3.5"D x 1.5"H (89 cm x 38 cm)	<b>Water Ingress:</b>	IPx7