



# Product Data Sheet

WMMG-7-27

C/Note	Doc Issue	Date	Approval
01019	2	28.10.2013	J.J.

PANORAMA  ANTENNAS

# WiMAX / LTE

## Wall Mount Gain MiMo Antenna



### WMMG-7-27

- Supports MiMo & diversity across 2G / 3G / 4G
- Two wideband elements with gain
- Durable wall mount housing
- Suitable for mast, wall and desk mounting

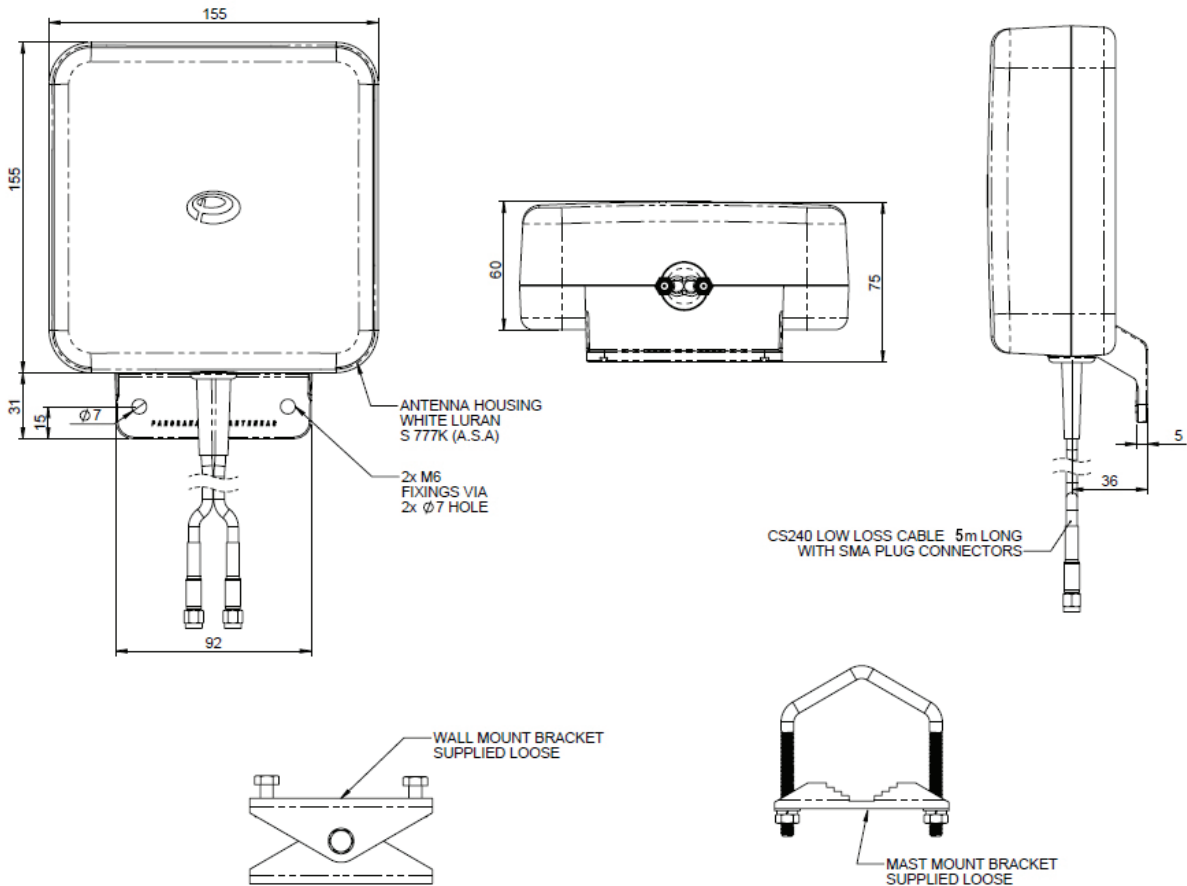
The WMMG antenna provides an innovative and future proof solution for 2G / 3G and 4G networks. Incorporating two separately fed ultra wideband elements in a single housing the WMMG is equipped to provide client side MiMo and diversity support for the networks of today and tomorrow. With 2dBi gain at 698-960MHz, 5dBi gain at 1710-2170MHz and 4dBi gain at 2.2-2.7GHz the WMMG provides extra gain performance where it is needed most.

The rugged, weatherproof housing is designed for wall mounting. Wall and mast mount brackets are provided.

5 metres of fitted low loss double shielded twin cable minimises exposed connector joints and simplifies cable management for easy installation.

The WMMG is an cost effective value added product for network operators and service providers ensuring a stable link with improved data rates for subscribers thereby improving satisfaction and retention.

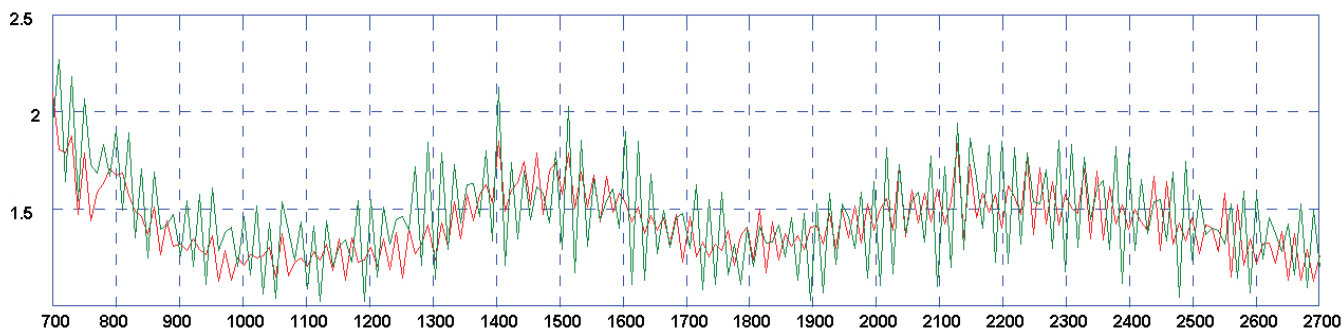
### Technical Drawing



# WiMAX / LTE

## Wall Mount Gain MiMo Antenna

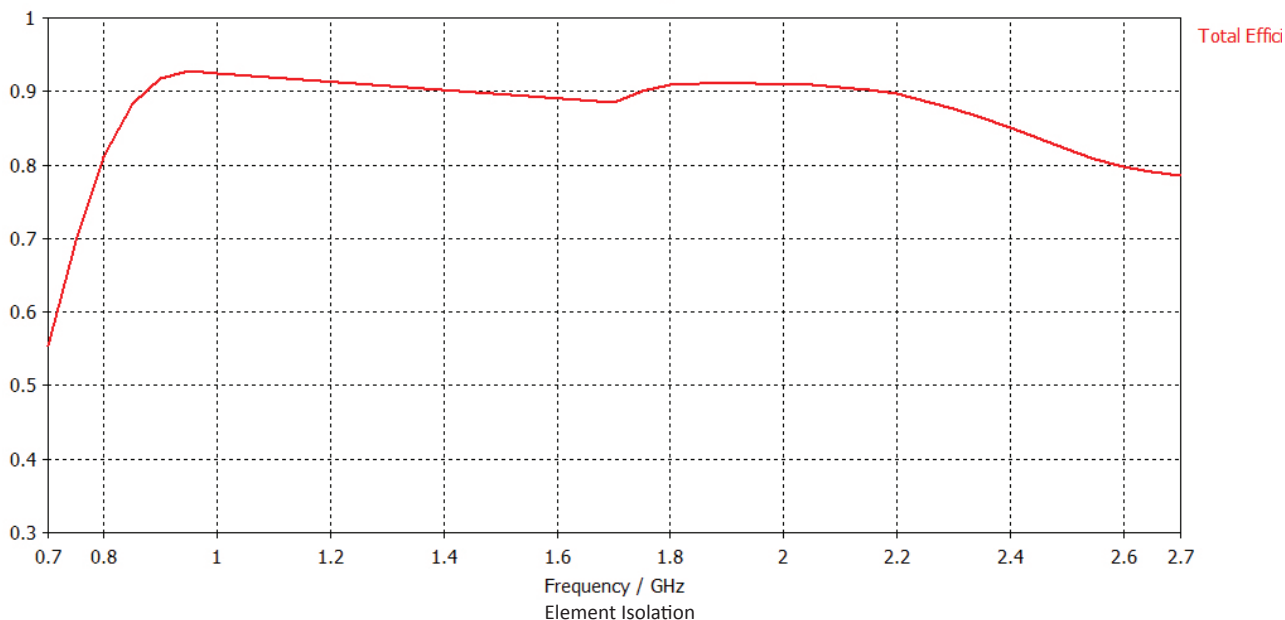
Typical VSWR Elements 1 & 2 \*



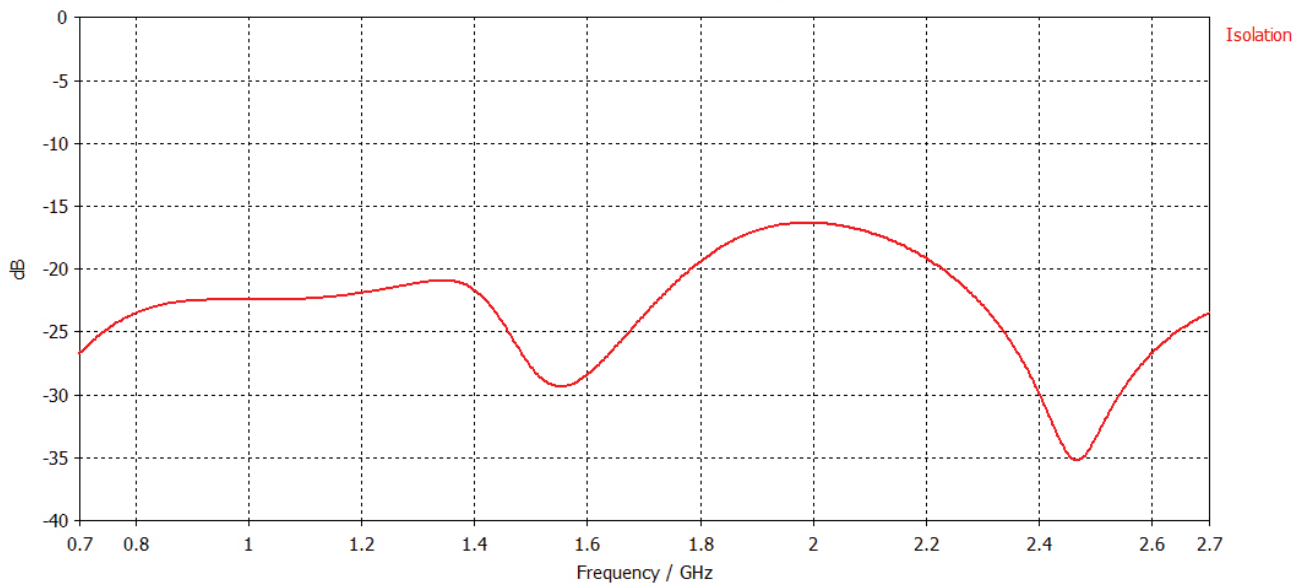
\*VSWR Measured with 5m of CS29 cable

Typical Efficiency

Total Efficiency



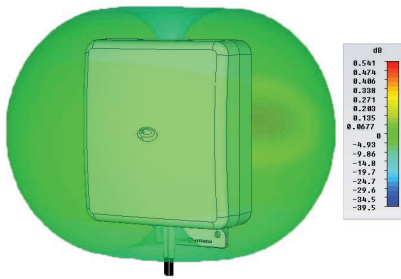
Element Isolation [Magnitude in dB]



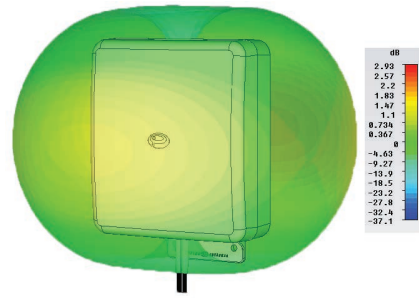
# WiMAX / LTE

## Wall mount Gain MiMo Antenna

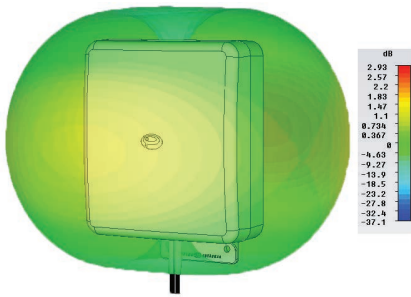
3D Gain Plot (750MHz)



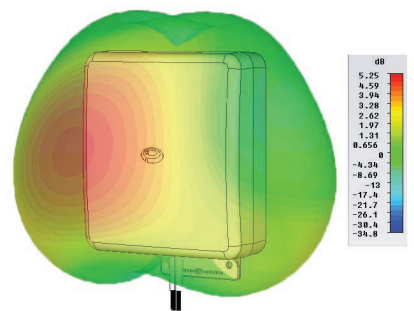
3D Gain Plot (850MHz)



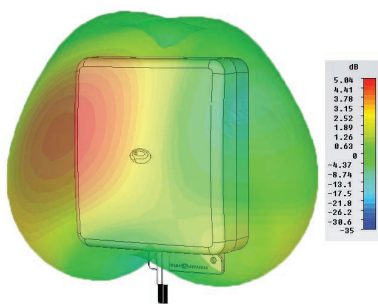
3D Gain Plot (950MHz)



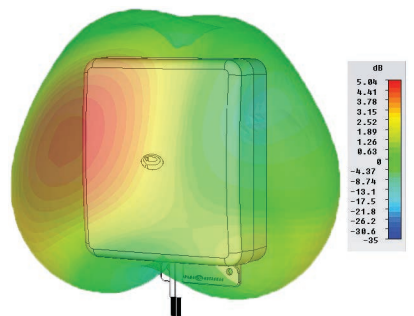
3D Gain Plot (1800MHz)



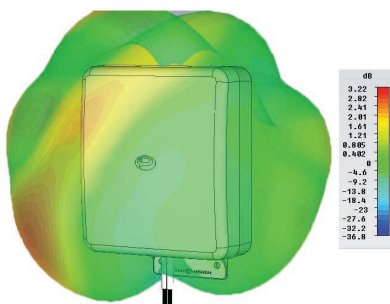
3D Gain Plot (1900MHz)



3D Gain Plot (2100MHz)



3D Gain Plot (2600MHz)



# WiMAX / LTE

## Wall mount Gain MiMo Antenna

<b>Part No.</b>		WMMG-7-27
<b>Electrical Data</b>		
Frequency Range (MHz)	Antenna 1	698-960 / 1710-2700
	Antenna 2	698-960 / 1710-2700
Operational bands	2G / 3G / 4G	
Radiation pattern	Hybrid	
VSWR	< 2:1	
Peak Gain (excluding cable loss)	698-960MHz	2dBi
	1710-2170 MHz	5dBi
	2.2-2.7 GHz	4dBi
Efficiency - excluding cable loss (all bands)	> 50%	
Correlation co-efficient ( all bands)	< 0.2	
Element isolation	> 20dB	
Max input power (W)	20 Watts	
Impedance	50Ω	
<b>Mechanical Data</b>		
Dimensions (mm)	Height	186
	Width	155
Operating temp (°C)	-30° / +70°C (-40° /180°F)	
Material	ASA	
Colour	RAL9010 (Pure White)	
Ingress Protection	Equivalent to IP66	
<b>Mounting Data</b>		
Fixing	Wall mount / mast mount / desk mount	
Mounting bracket material	Stainless steel / Aluminium	
Pole diameter (mm)	20-50 / (0.78 - 1.96")	
<b>Cable Data</b>		
Type	2 x CS29 Coax	
Diameter (mm)	5 (0.2")	
Length (m)	5 (16')	
Termination	2 x SMA (m) (p/n WMMG-7-27-5SP) or 2 x FME (f) (p/n WMMG-7-27-5F)	
Adaptor Pigtails	Supplied separately	

**Panorama Antennas Ltd**  
Frogmore, London, SW18 1HF, United Kingdom

T: +44 (0)20 8877 4444  
F: +44 (0)20 8877 4477

E: [sales@panorama-antennas.com](mailto:sales@panorama-antennas.com)  
[www.panorama-antennas.com](http://www.panorama-antennas.com)

Waiver: The data given above is indicative of the performance of the product/s under particular conditions and does not imply a guarantee of performance. These specifications are subject to change without notice.  
Copyright © Panorama Antennas Ltd. All rights reserved.