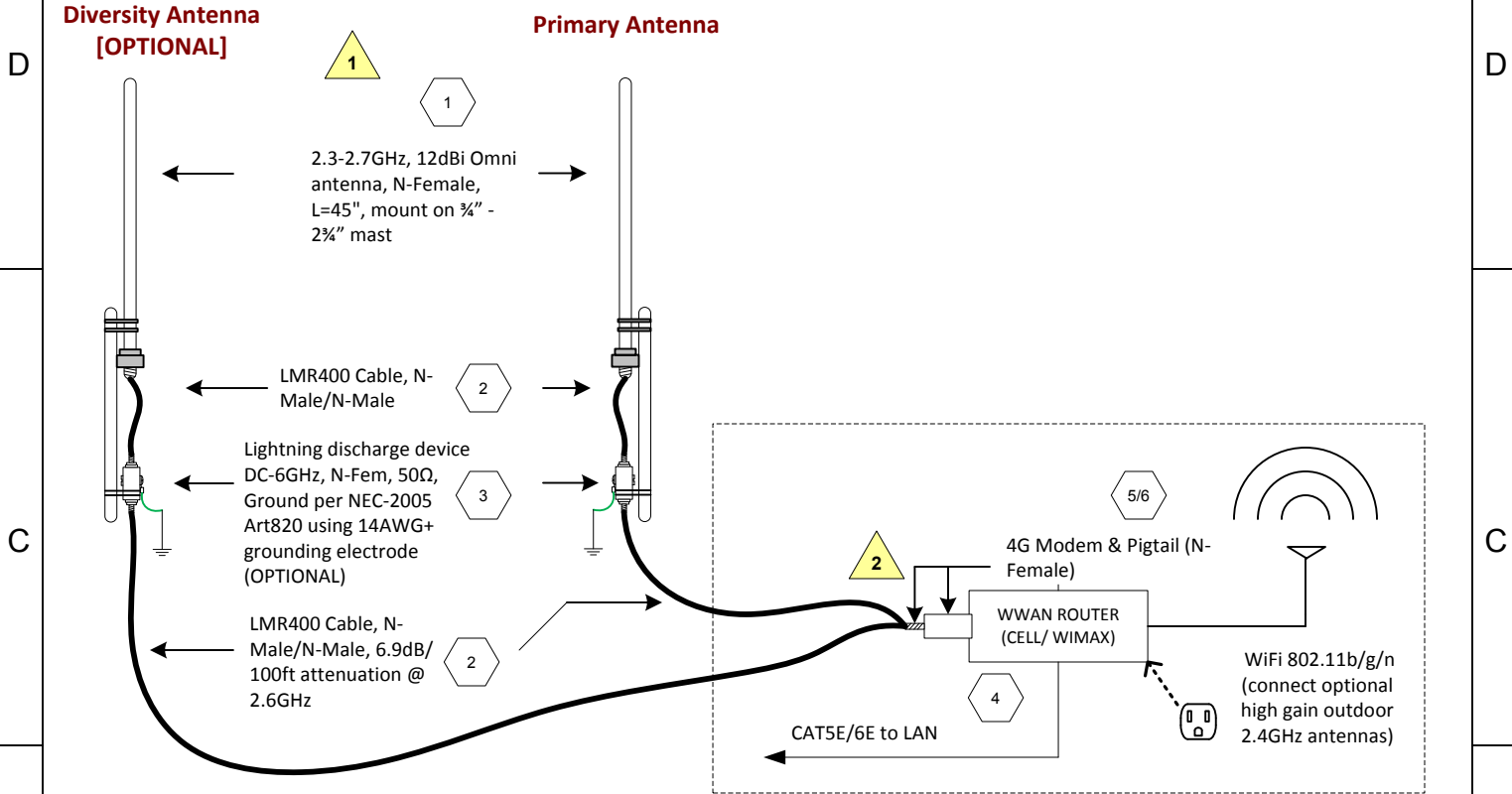


# Improving In-Building Coverage of Clear 4G USB Modem with Outdoor Omni-directional antenna in MIMO topology


**⚠ Note it is the users responsibility to abide by Clearwire/FCC mandated EIRP limits. Contact us at support@rfwel.com for assistance with RF link budget analysis if unsure or simply to discuss your application.**



## Sample Bill of Materials

ITEM	QTY.	PART NO.	DESCRIPTION
1	2	RFWAT2P5OMNMF	2.3-2.7GHz Wimax Omni-directional antenna, 12dBi, N-Female Jack
2	4	952310	10ft LMR-400 low loss coaxial cable (N-Male/N-Male)
3	2	LPNPNF276V	Coax Lightning protector DC-6GHz, IL<0.7dB, 276VDC, N-Fem
4	1	MBR1200	CradlePoint MBR1200 Failsafe Cellular/WiMax/WiFi Router
5	1	RFWADPPXU1900NF	Clear 4G USB PXU1900 External Antenna Adapter
6	1	PXU1900	Clear 4G USB WiMax Modem (Ubee PXU1900)



 <p>1616 S. Stapley Dr. Ste 103, Mesa, AZ, 85204, U.S.A www.rfwel.com   480.218.1877</p>	Clear WiMax Indoor Coverage Improvement			
	Using outdoor omni-directional antenna to improve indoor coverage for the Clear 4G USB modem. Includes lightning surge protection & MIMO support			
	DRAWN BY: RT (Engr) APPROVED BY:	SIZE	LIC NO AZ ROC # 253407	DWG NO BW-00000000
FREQ(s): 2.4-2.7GHz WiFi+WiMax	SCALE	NO SCALE	FRN: 0018086041	SHEET 1 OF 1